

Manufacturer: Willowcrete Manufacturing Co. Ltd. Deptford Terrace, Sunderland, Tyne & Wear, SR4 6DF

Intended use: Concrete lintel intended for use in walls and partitions

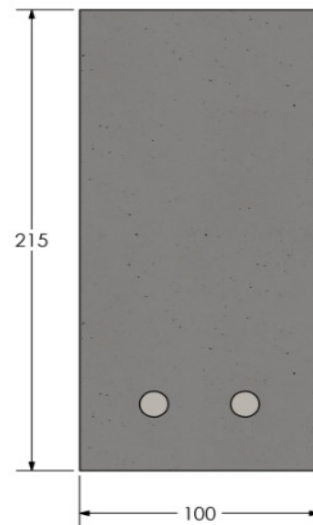
Assessment and verification of constancy of performance: System 3

Relevant Harmonised Standard: EN 845-2:2013

CERAM, Queens Rd, Penkhull, Stoke-on-Trent, ST4 7LQ (Notified Body No : 1289) - 8.2 Initial Type Testing - Ref: 114437 (QT-18539/2/BW) /Ref: 1.0A

Declared Performance

Lintel Length (mm)	Load Bearing Capacity (kN)	Deflection at 1/3 of Load Capacity (mm)
600	152.47	0.10
750	114.21	0.15
900	91.22	0.20
1050	75.87	0.27
1200	64.88	0.35
1350	56.62	0.43
1500	50.18	0.52
1650	45.01	0.62
1800	40.77	0.73
2100	34.21	0.98
2400	29.37	1.25
2700	25.62	1.55
3000	22.64	1.88
3300	20.19	2.24
3600	18.14	2.61



Fire Resistance	NPD
Mass	0.50 kN/m
Water Absorption	NPD
Water Vapour Permeability	NPD
Dangerous Substances	None
Durability (Against Corrosion):	C2
Durability (Against Freeze/Thaw):	Resistant

The performance of the product identified is in conformity with the declared performance above. This declaration of performance is issued under the sole responsibility of the manufacturer identified.

Issued By: Jeff Broomfield (Managing Director)

Date: 02/10/2017

