

**Manufacturer:** Willowcrete Manufacturing Co. Ltd. Deptford Terrace, Sunderland, Tyne & Wear, SR4 6DF

**Intended use:** Concrete lintel intended for use in walls and partitions

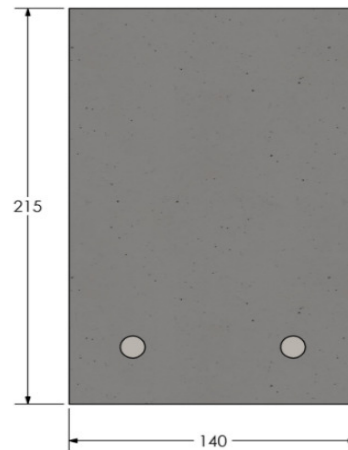
**Assessment and verification of constancy of performance:** System 3

**Relevant Harmonised Standard:** EN 845-2:2013

*CERAM, Queens Rd, Penkull, Stoke-on-Trent, ST4 7LQ ( Notified Body No : 1289 ) - 8.2 Initial Type Testing - Ref: 114437 (QT-18539/2/BW) /Ref: 1.0A*

**Declared Performance**

Lintel Length (mm)	Load Bearing Capacity (kN)	Deflection at 1/3 of Load Capacity (mm)
600	<b>158.92</b>	0.08
750	<b>118.98</b>	0.11
900	<b>94.98</b>	0.15
1050	<b>78.94</b>	0.20
1200	<b>67.46</b>	0.26
1350	<b>58.82</b>	0.32
1500	<b>52.07</b>	0.39
1650	<b>46.66</b>	0.46
1800	<b>42.21</b>	0.54
2100	<b>35.31</b>	0.72
2400	<b>30.20</b>	0.92
2700	<b>26.25</b>	1.14
3000	<b>23.08</b>	1.37
3300	<b>20.47</b>	1.62
3600	<b>18.29</b>	1.88



Fire Resistance	NPD
Mass	0.50 kN/m
Water Absorption	NPD
Water Vapour Permeability	NPD
Dangerous Substances	None
Durability (Against Corrosion):	C2
Durability (Against Freeze/Thaw):	Resistant

The performance of the product identified is in conformity with the declared performance above. This declaration of performance is issued under the sole responsibility of the manufacturer identified.

**Issued By:** Jeff Broomfield (Managing Director)

**Date:** 02/10/2017

*J. A. Broomfield*